

# Office to let

## Tower Center International

Bucharest, Sector 1, 15-17 Ion Mihalache Blvd.



### Building information

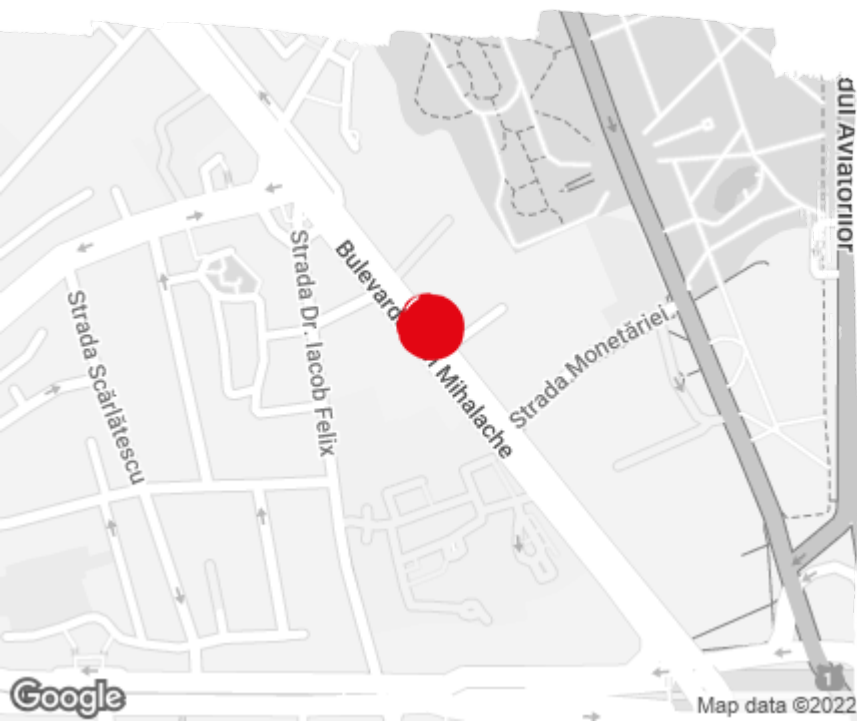
|                        |              |
|------------------------|--------------|
| Building status        | Existing     |
| Year of reconstruction | 2012         |
| Parking ratio          | 1 / 163 sq m |
| Total building area    | 31 000 sq m  |

### Commercial terms

|                    |               |
|--------------------|---------------|
| Office space*      | after login * |
| Parking            | after login * |
| Service charge*    | after login * |
| Minimum lease term | after login * |
| Availability       | after login * |

\* Asking terms for m<sup>2</sup>/month

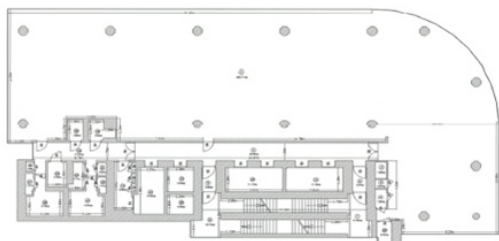
### Location



### Available space

Building completely leased

Typical floor plan



Public transport

Metro: M1, M2

Bus: 300, 205, 282

Tram: 24, 42, 45, 46,

Contact



+40 21 302 3400

More information